

# MONTHLY MEMBERSHIP PROGRESS REPORT

District 325B1

Results as of: 1/31/2020

GMT:

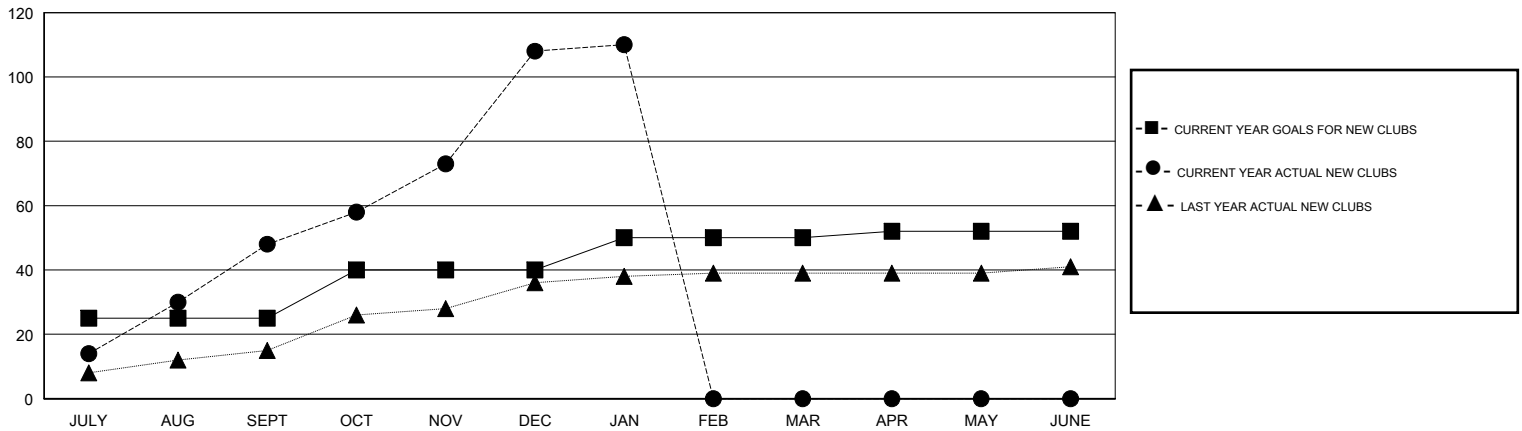
LOCATION NEPAL

GMT CA

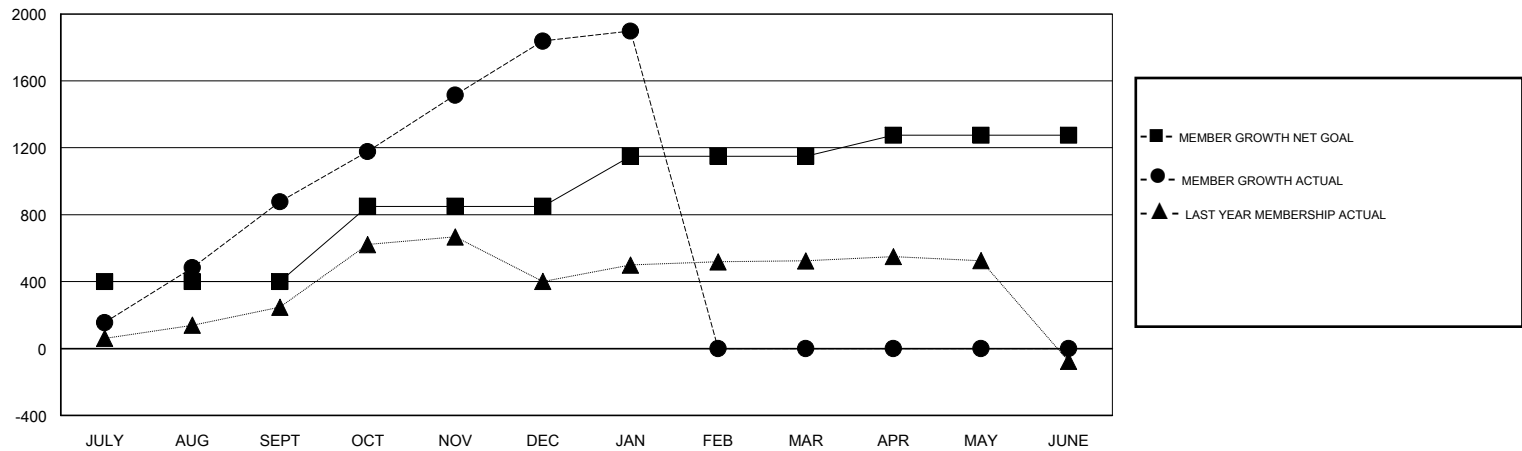
Clubs			
RESULTS FOR 2019-2020			
QUARTER	NEW CLUB GOAL	NEW CLUBS	DROPPED CLUBS
JULY/AUG/SEPT	25	48	0
OCT/NOV/DEC	15	60	3
JAN/FEB/MAR	10	2	1
APR/MAY/JUNE	2	0	0

Members			
RESULTS FOR 2019-2020			
QUARTER	MEMBER GROWTH NET GOAL	MEMBER GROWTH ACTUAL	DROPPED MEMBERS ACTUAL (including transfers)
JULY/AUG/SEPT	400	1357	440
OCT/NOV/DEC	450	1568	600
JAN/FEB/MAR	300	158	91
APR/MAY/JUNE	125	0	0

GOALS AND ACTUAL NEW CLUBS CUMULATIVE



GOALS AND ACTUAL MEMBERS CUMULATIVE



DROPPED CLUBS: 4	270 CLUBS OF 473 ADDED 1 OR MORE NEW MEMBERS	<b>GENDER DISTRIBUTION</b> MALE 9,179 (73.18%) FEMALE 3,364 (26.82%)
<b>DROPPED MEMBERS</b> DECEASED 4 CLUB CANCELLED 72 OTHER 1,055 <hr/> TOTAL 1,131	<a href="#">CLICK HERE FOR CUMULATIVE MEMBERSHIP DATA</a>	TOTAL FAMILY UNIT MEMBERS 8,472 FAMILY MEMBERS PAYING HALF DUES 5,365